

17.1 Inheritance

Question Paper

Course	CIEIGCSE Biology
Section	17. Inheritance
Topic	17.1 Inheritance
Difficulty	Medium

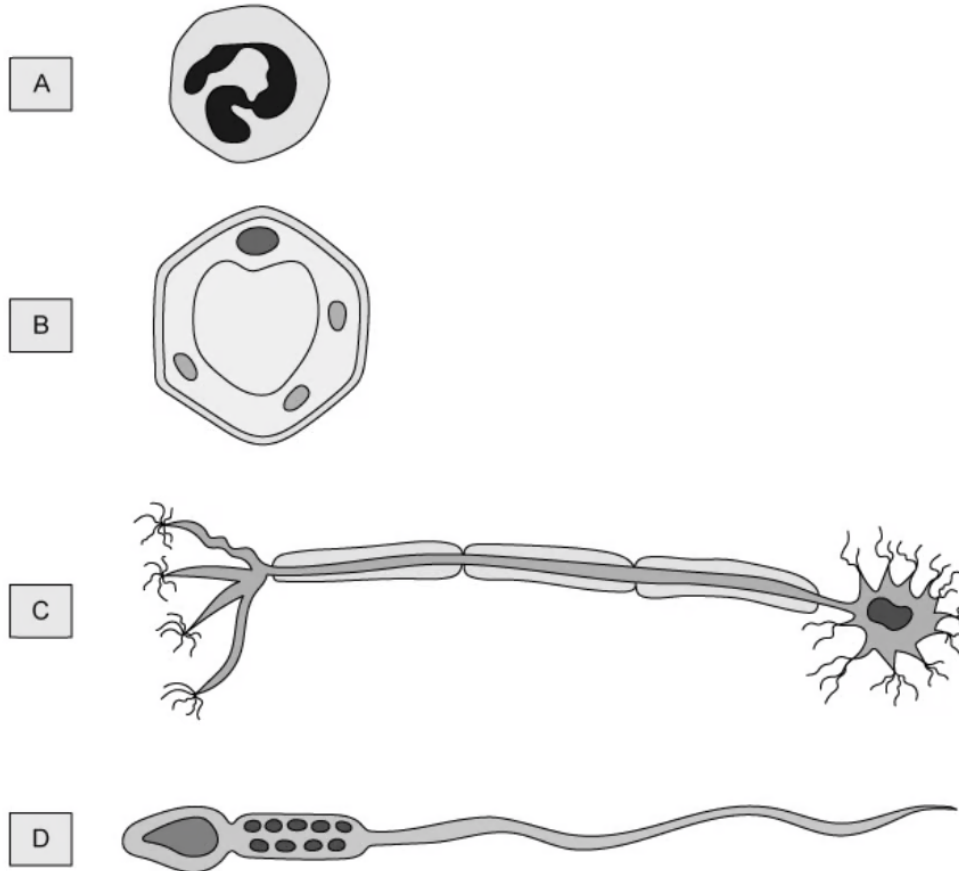
Time allowed: 10

Score: /6

Percentage: /100

Question 1

New cells are formed by cell division of existing cells. The diagram below shows four different cells. Which one is formed by meiosis?



[1 mark]

Question 2

Albinism is a condition where the pigment melanin does not get produced in the skin, hair and eyes. This is an inherited condition that is caused by a recessive allele.

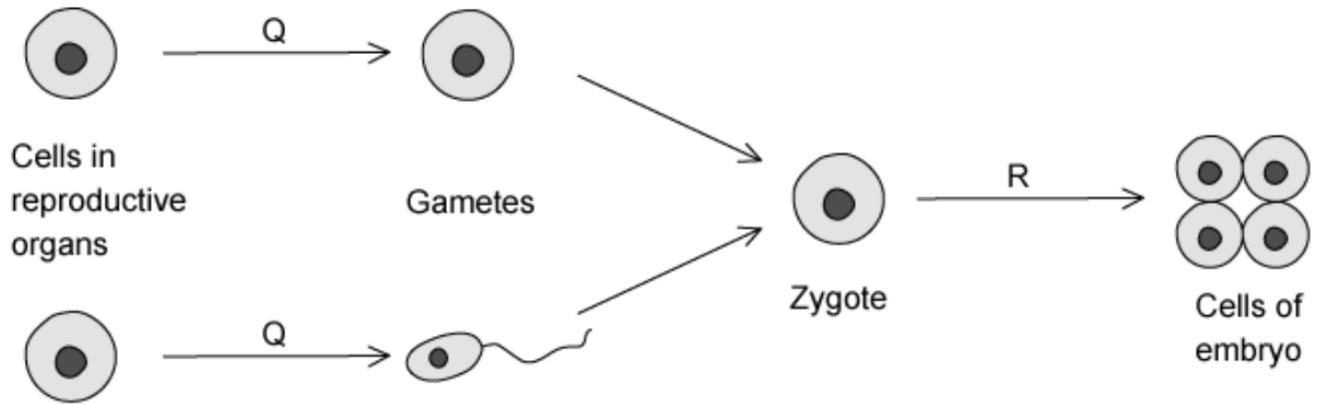
If both parents have albinism what are the chances of the offspring being an albino child?

- A** 0% **B** 25% **C** 75% **D** 100%

[1 mark]

Question 3

The diagram below shows the process of sexual reproduction.



Which of the processes are shown by stages Q and R?

	Q	R
A	meiosis	mitosis
B	mitosis	mitosis
C	meiosis	meiosis
D	mitosis	meiosis

[1 mark]

Question 4

What does the term haploid mean?

- A** A nucleus containing two sets of chromosomes
- B** A nucleus containing a single set of chromosomes
- C** A person with only one X chromosome
- D** A person with XXY chromosomes

[1 mark]

Question 5

When a somatic (body) cell undergoes cell division, two daughter cells are produced with the same chromosome number as the parent cell.

Which type of division has taken place?

- A** Meiosis producing genetically different cells.
- B** Mitosis producing genetically identical cells.
- C** Meiosis producing genetically identical cells.
- D** Mitosis producing genetically different cells.

[1 mark]

Question 6

Two individuals are crossed.

One is homozygous dominant (TT), the other heterozygous.

What will the genotypes of the offspring be?

A	all Tt
B	50% TT, 50% Tt
C	50% TT, 50% tt
D	25% TT, 50% Tt, 25% tt

[1 mark]